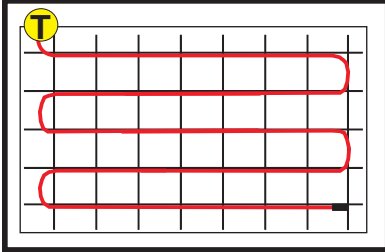


# In-Slab Cable Installation

- Consult your **layout diagram** if you have received one and identify & mark out the perimeters of your heated area. Take into account any floor fixtures, whether it be cupboards or island benches in living areas or baths, showers, vanities or toilets in bathrooms.



- Plan which direction you will be laying the cable. It is always **easier and more economical to run the heating cable parallel to the longest wall** of the room.

The cable chosen has been calculated for a spacing of 20cm, which is the standard spacing for the re-inforcing bar (reo) to which the cables are to be cable tied. Note how many lengths of runs there are & their respective lengths eg 4 @ 5.2m, 14 @ 6.2m, 5 @ 5.2m. Add on 20cm for the loop of each run. Add them up e.g. the above = 133.6m. It's better to be under than over.



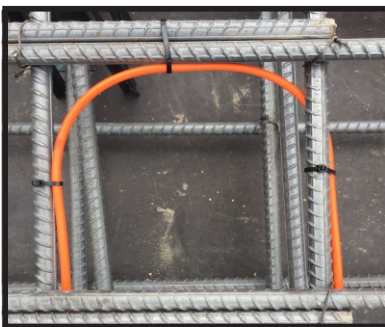
- Draw the **heater power lead (black)** and floor probe (**white**) up the conduits to the thermostat point. (←See photo). Then **Connect the Installation Monitor** (instructions in box), insert the batteries and **turn the monitor on** (white light). Tape or hang the monitor on the wall. Cover with a plastic bag if rain is expected.



- The Coldbuster in-slab heating cable has a **fixed length** and a self terminating end-cap. **It must not be cut or crossed.** It is important to work out the afore mentioned calculations to see that you have the correct size heater and to amend the run lengths if it is slightly out.

**We repeat: the CABLE MUST NOT BE CUT!**

- See diagram to the right. You can either lay the heating away from you, eg heater 1,2,3. or take Heater #3 to your furthest point & work your way back (eg.3,2,1) to the thermostat. The thermostat could also be half way.
- Ideally, lay the heating cable **below** the reo (does take longer) to have better protection from the concretors.
- Take care to avoid sharp edges at the ends of reo or any tie wires used to



join sections of reinforcing.

- We suggest that the cable is tied to the reo at minimum every meter. Cut the tails of the cable ties off & bin them. Do not let them drop down as they can possibly float up & stick out while the concrete is being poured.

